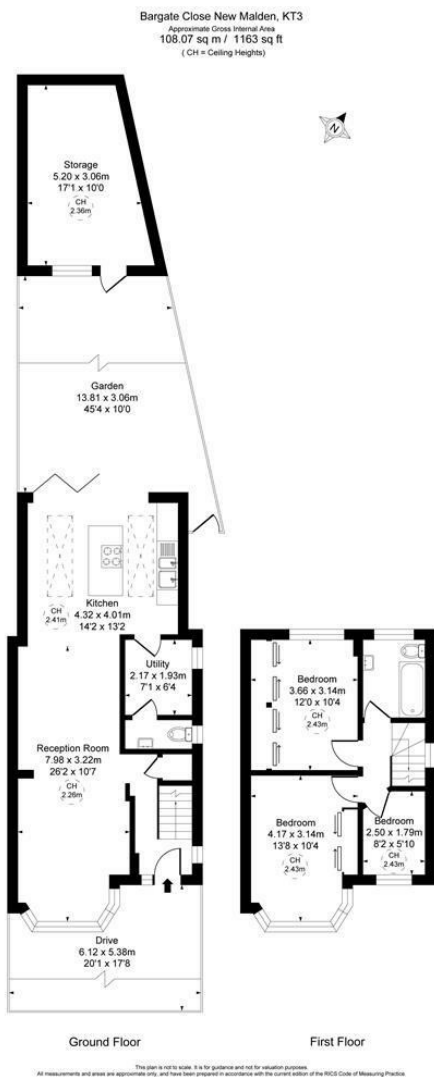


Bargate Close New Malden, KT3 6BQ

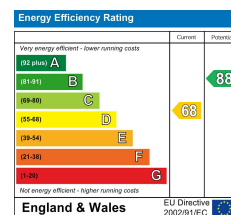
£700,000 Freehold



This spacious and well presented **THREE BEDROOM**, rear extended 1930's "Mock Tudor" semi-detached house has off street parking, 45'4 ft garden with home office and modern kitchen with separate utility room and downstairs w.c. Located in popular, tree-lined residential area within easy access to Motspur Park station, shops and the green space of The Sir Joseph Hood Memorial Playing Fields. An excellent first or second time purchase, with no onward chain and future potential to further extend s.t.p.p.



- Three Bedroom - 1163 sqft
- Attractive 1930's Mock Tudor Semi-Detached House
- Off Street Parking And Side Access
- Rear Extension With Modern Kitchen
- Separate Utility Room And Downstairs WC
- No Onward Chain
- Easy Access To Motpur Park Station And Shops
- Potential To Further Extend S.T.P.P
- 45'4 ft Garden With Home Office
- EPC - D Council tax band - E



For Free Mortgage Quote and Best Mortgage Rates, call Ellisons Mortgage Advisor on 0208 944 9595



Although these particulars are believed to be correct, their accuracy is not guaranteed and they do not form part of any contract.

Celebrating 30 years of successful Sales and Lettings in Merton

